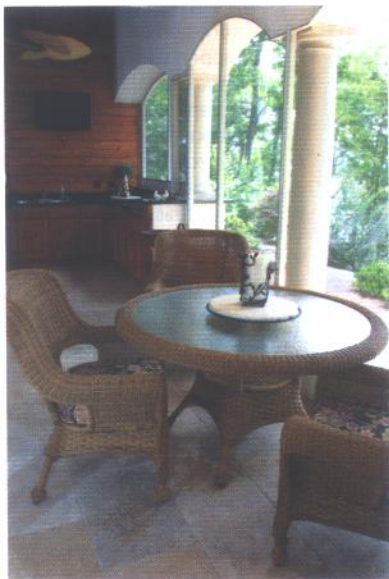
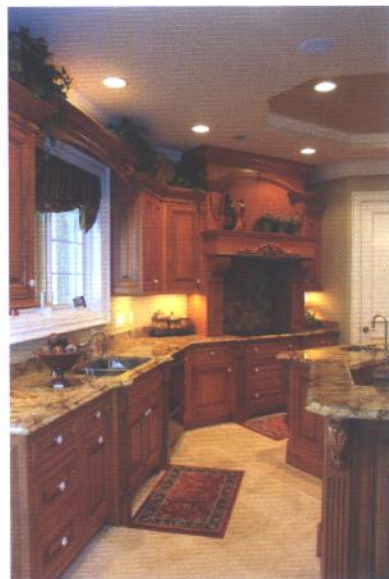




# DESTINATION ESCAPES CAN BECOME HOMES

BY LAURA ROBERSON  
PHOTOGRAPHY BY JUSTIN FEE



## Swept Away



**FOUR-HUNDRED ACRES** of lakeside mountain property? Paradise. All this just minutes from town? Impossible.

At the Windswept community in Morristown, TN, what was once a home-buying impossibility is quickly becoming a reality. Lake Developers, II, has raised the bar on luxury living, seamlessly melding the comfort of modern conveniences with the welcome solitude of a mountain retreat.

Situated on a 400-acre Cherokee Lake peninsula flanked by the Clinch Mountains and the Smoky Mountains, Windswept offers 360 degree views, literally.

"Our property owners have the opportunity to own views so rare that the average person will never see them," Chris Creekmore, marketing director and broker for Lake Developers, II, says, "and to have that ten minutes from major medical services and inexhaustible shopping is unheard of in today's market."







## WELCOME HOME

The back exterior of the Bunch home (above right) allows for entertaining throughout the year with a screened in kitchen and seating area, a pool just a few feet away, and clear lake views to complete this picture-perfect setting. Equipped with 14-foot ceilings (far left), recessed lights and access to the neighboring kitchen, the family room is perfect for family get togethers of any kind. Refinished barn doors (left) from Don Bunch's family barn and personalized glass etchings provide a warm welcome for visiting guests. Upon entering the home, family and guests are greeted with a winding staircase (lower left) with wrought iron fixings that lead to the second floor's three bedrooms. The arched doorways and Roman columns (bottom left) in the home embody the traditional architectural details of a Mediterranean home. Above the staircase in the foyer hangs a wrought iron chandelier with hanging glass fixtures giving the home another warm and elegant entry.



FOR DON AND PELLE BUNCH, building in Windswept was an obvious decision. After a visit to Naples, Florida, the couple decided to trade their rustic, ranch home for a Mediterranean style lakehouse. Windswept seemed the perfect place to merge Tennessee living with waterfront luxury.

"There is so much that makes this the perfect place to build a home you can retire or escape to—the views, the water access, the upscale standard," Rick Roberts of Rick Roberts Construction says. "If all of the homes in Windswept meet the standard we set for this house, it will be the most unique community in East Tennessee. I have no doubt."

From the outside, the Bunch home looks straight out of Southern Florida with its sandy stucco exterior and red-tiled roof. But, inside, Kentucky interior designer Rebecca Castle of Rags to Riches effortlessly brought two worlds together. While clay-colored walls, floor-to-ceiling fireplaces, and the deep-seated warmth of the home speak of Southern hospitality, towering ceilings, arched doorways and





Roman-style columns are distinctly Mediterranean. With Travertine marble floors throughout the downstairs, Italian granite countertops in the kitchen and extensive crown molding, luxury comes second to none in this lakeside retreat.

Such attention to detail was no accident. It's part of the Windswept promise.

"Since homes of this magnitude are all custom-made, an incredible amount of time is spent with the customer to make sure the job is done right the first time," Chad Gust, president of Windswept's primary building company Gust Construction, says. "That's the best part of a community like this. The builders and the buyers are committed to a great project."

But, when designing the home, the Bunches emphasized more than high-end style. They wanted to create an oasis for family and friends. As a constant reminder, Pelle had two butterflies etched in the glass surrounding the double front doors Don pulled from the family barn. To her, they symbolize the "love and safety" of the space and help bring the outside in.

In keeping, Pelle chose mostly natural materials with earthy colors and incorporated South Florida palms into the decor. The sliding glass doors along the back of the house allow the Bunches to easily join the kitchen and leisure areas with their outdoor space. With a screened-in kitchen and grill, a saltwater infinity edge pool by Sequoyah Pools, waterfall and whirlpool, the luxurious back patio is as much a part of the home as the interior.

"You can just kind of enjoy it as a family. You're in [the kitchen] cooking, and you can talk. I love the openness," Pelle says. "It just creates a huge indoor/outdoor living space, a place to come and enjoy and relax."







IN WINDSWEPT, though, home isn't the only place for residents to kick back.

Property owners have access to the historic Windswept Manor, a 10,000 square foot home turned clubhouse built in the 1940s from hand-hewn logs pulled from the river basin. The combination of the manor's fully-equipped chef's kitchen, overnight accommodation, billiard room, cocktail lounge and stunning mountain and lake views make it the perfect place for private or neighborhood socials.

Outside the clubhouse, residents can enjoy Windswept's tennis courts, premium boat slips, parks and walking trails.

"It's a fun place to live. There's something for everybody to do. It's not a retirement community," Creekmore says. "When buyers see Windswept, it's where they want to live the rest of their lives."

